

How Prepared Are You for an Emergency?

The Common Operational Picture

A total solution for integrated incident management from Situational Awareness Systems



Experienced

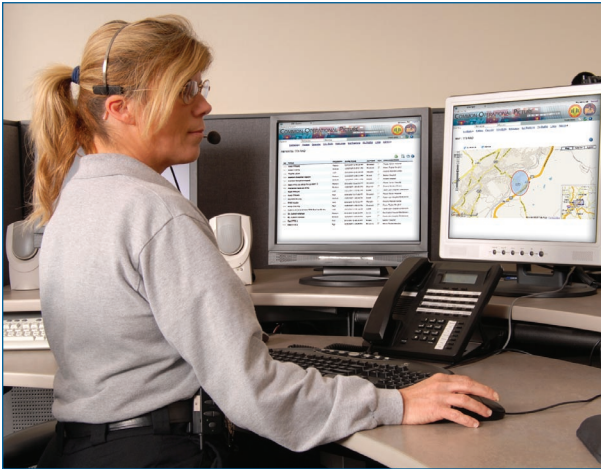
SITUATIONAL AWARENESS SYSTEMS

Our mission is to develop advanced information systems for the Defense, Homeland Security, and Healthcare domains. By providing our users with superior situational awareness, we enable them to make the right decisions quickly—ultimately saving lives. Our innovative technologies actively collect, and organize data to transform it into actionable knowledge. This enables our users to spend more time problem solving and less time managing information. We are also dedicated to delivering affordable, intuitive solutions that exceed the expectations of our customers.

THE COMMON OPERATIONAL PICTURE (COP)

How prepared are you for an emergency?

Emergency Incidents can vary by scale, scope, impact and duration. No matter what the characteristics, however, your response must be rapid and effective. While telephones and blackboards are reliable, they are also bottlenecks that hinder coordination of large, distributed functional elements, companies and agencies. The COP offers a comprehensive, web-based solution for emergency management that enables collaboration across organizational boundaries while keeping sensitive information secure.




With its intuitive interface, you can easily share the right data with the right people. The heightened situational awareness provided by the COP will keep everybody on the same page and synchronized for maximum effect. Thanks to the COP, the next time somebody asks if you are prepared for an emergency, the answer will always be an unqualified YES!



Focused

Designed From The Ground Up - By Incident Managers for Incident Managers

From day one, we designed the COP with the end user in mind. We used seasoned emergency managers as consultants to determine how best to display and manage critical information. In addition, we tested our system in numerous exercises and beta sites to make sure it performed in practice. The result is an Incident Management tool that can optimize your emergency management process.



DASHBOARD: ANTHRAX OUTBREAK

ALERTS

TITLE	PRIORITY	DATE/TIME	ACK	ORGANIZATION
Status has been set to 'Unread'	Low	11/13/2007 11:48:28 AM	<input type="checkbox"/>	NEWS Management
Status has been set to 'Unread'	Low	11/13/2007 10:59:24 AM	<input type="checkbox"/>	NEWS Management
Severity has been designated to Low	Low	11/13/2007 8:56:15 PM	<input checked="" type="checkbox"/>	NEWS Management
Severity has been designated to Low	Low	11/13/2007 8:50:15 PM	<input checked="" type="checkbox"/>	NEWS Management
Severity has been designated to High	Low	11/13/2007 8:59:05 PM	<input checked="" type="checkbox"/>	NEWS Management

RESOURCE REQUESTS

RESOURCE TYPE	QUANTITY	REQUESTING ONE	STATUS	DESTINATION
AT Ambulance (Fixed-Wing)	1	NEWS Management	Closed	EMMAUS

BEDS

IN PATIENT BEDS	CURRENT AVAIL.	In Zones	In Phase
Medical/Surgical	2	1	0
Pediatric ICU	3	1	1
Adult Intensive Care (ICU)	4	1	0
Psychiatric	0	1	0
Psychiatric	0	1	1
Burns	2	1	1
Negative Pressure/Isolation Rooms	1	7	0

REPORTS

Intuitive Incident Management- Customizable and Interoperable

The COP gives you the flexibility to manage one or more incidents from your facility. The COP can easily be configured for your emergency command structure—be it a single location or a conglomeration of different organizations spread across a region. Critical information can be shared across organizational boundaries, easily and securely. We worked with experienced experts to perfect the look and feel of our interface—this ensures your people will be immediately productive with the COP, with a minimum of training.

24/7 On-line Collaboration - Heightened Situational Awareness

All emergencies are local. Depending on the magnitude and severity, incidents escalate to include more and varied responders from the local, county, regional, state and federal levels. The COP enables these distributed partners to securely collaborate in real-time to effectively manage the incident.

Automated Reporting - NIMS and HICS Compliant

When you use the COP, all inputs, transactions and decisions are automatically collected and organized in our database. At any time, you can generate reports using NIMS or HICS compliant forms. These reports can be automatically instantiated and manually edited. This means you can spend less time dealing with paperwork and more time managing your incident.

All your information in one location

When a situation requires an organized and immediate response, the dashboard keeps details clear and concise. An easy-to-use and secure method of organization, keep track of what is going on real-time!



Innovative

INCIDENTS: TTX RAD

INCIDENT NAME	TYPE	LOCATION	STATUS	SEVERITY	IC
TTX RAD	Terrorism	Norstep Perrysylvania	Notified	Critical	Donald Struback
SLHMH TTX RAD	Terrorism	Bethlehem Perrysylvania	Notified	Catastrophic	
EH Terr	Bio-Terrorism	easton Perrysylvania	Notified	Medium	Cornelio Corona

INCIDENT DETAILS

Incident Name: TTX RAD
 Type: Terrorism
 Status: Notified
 Affiliations: OP
 Severity: Critical
 Start Time: 10/15/2007 1:12:30 PM
 Location: Norstep, Pennsylvania 18084
 Lat: 41.0489 Long: -75.1800 Radius (in feet): 1.00

ORGANIZATION CHART

INCIDENT ACTION PLAN

POINTS OF CONTACT

Incident Profile

Users can view and take roles in incidents in their jurisdiction. Incidents can be created, and roles can either be manually assigned or automatically filled based on user availability. Users can be notified via e-mail, text SMS message, or automated voice phone call to determine user availability.

Alerts and Reports

Users can view and send short alerts to other users participating in an incident. These alerts appear in the heads-up display and will remain highly-visible until they are acknowledged by the user. Users can view and send reports relating to an incident. Reports can be used to send long-form information. They can be quoted and replied to like e-mail, and can have attachments.

REPORTS: TTX RAD

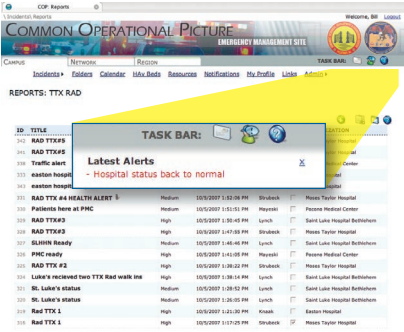
ID	TITLE	PRIORITY	DATE/TIME	AUTHOR	ACK	ORGANIZATION
242	RAD TTX#5	Medium	10/15/2007 1:03:20 PM	Struback	<input type="checkbox"/>	Peace Taylor Hospital
240	RAD TTX#5	Medium	10/15/2007 1:07:28 PM	Struback	<input checked="" type="checkbox"/>	Peace Taylor Hospital
198	Traffic alert	High	10/15/2007 1:03:28 PM	Hayashi	<input type="checkbox"/>	Peace Medical Center
233	easton hospital report	Medium	10/15/2007 1:18:11 PM	Knox	<input type="checkbox"/>	Easton Hospital
193	easton hospital report	Medium	10/15/2007 1:16:15 PM	Knox	<input type="checkbox"/>	Easton Hospital
231	RAD TTX #4 HEALTH ALERT #	Medium	10/15/2007 1:03:08 PM	Struback	<input type="checkbox"/>	Peace Taylor Hospital
199	Patients here at PMC	Medium	10/15/2007 1:05:53 PM	Hayashi	<input type="checkbox"/>	Peace Medical Center
241	RAD TTX#5	High	10/15/2007 1:05:49 PM	Lynch	<input type="checkbox"/>	Saint Luke Hospital Bethlehem
239	RAD TTX#5	High	10/15/2007 1:17:58 PM	Struback	<input type="checkbox"/>	Peace Taylor Hospital
207	SLHMH Ready	Medium	10/15/2007 1:46:46 PM	Lynch	<input type="checkbox"/>	Saint Luke Hospital Bethlehem
236	PMC ready	High	10/15/2007 1:43:08 PM	Hayashi	<input type="checkbox"/>	Peace Medical Center
235	RAD TTX #2	High	10/15/2007 1:02:20 PM	Struback	<input type="checkbox"/>	Peace Taylor Hospital
234	SLHMH received two TTX Rad warn me	High	10/15/2007 1:36:14 PM	Lynch	<input type="checkbox"/>	Saint Luke Hospital Bethlehem
201	SL. Luke's status	Medium	10/15/2007 1:34:52 PM	Lynch	<input type="checkbox"/>	Saint Luke Hospital Bethlehem
200	SL. Luke's status	Medium	10/15/2007 1:26:39 PM	Lynch	<input type="checkbox"/>	Saint Luke Hospital Bethlehem
197	Rad TTX 1	High	10/15/2007 1:21:20 PM	Knox	<input type="checkbox"/>	Easton Hospital
196	Rad TTX 1	High	10/15/2007 1:17:25 PM	Struback	<input type="checkbox"/>	Peace Taylor Hospital

RESOURCES: EH TERR

RESOURCE TYPE	QUANTITY	REQUESTING ORG	STATUS	DESTINATION LOCATION
Select MAGAS	600	Easton Hospital	Open	LOADING DOCK
Select law enforcement foot patrol	5	Easton Hospital	Closed	Easton Hospital - arch building education room

Resource Management

Hospitals can manage resource allocation using HICS-resource-type integrated features. Resources can be requested from other campuses or regional organizations, or available resources can be shared with other organizations.

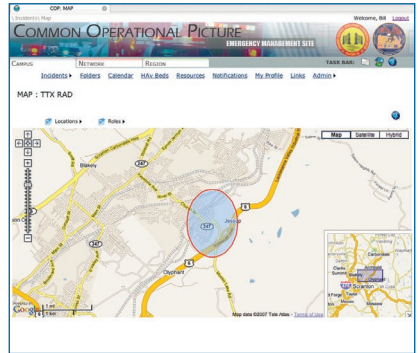


Heads-up Display

Throughout the COP web interface, a heads-up display is located in the top-right corner of each page. Relevant up-to-date information is displayed, including the currently selected incident, your assigned role, the number of alerts and reports, and the latest alerts.

Integrated Mapping

Incidents, personnel, and resources can be tracked by location and viewed on an annotated map. Interactive map controls to zoom and pan allow users to see other regional incidents. Objects can be filtered to only view relevant items.



Local and Regional Status Boards

Each incident has a local and an optional regional status board used to post issues that need resolution and to report on actions taken to resolve issues. The Local Status Board is only visible to the local hospital, while the Regional Status Board is visible to regional organizations participating in the incident.



Features

Secure, intuitive web interface

Battle-tested web interface. Each user has a secure login. System ensures that the information is protected, based on organization and individual preferences.

Configurable dashboard

Customize your incident dashboard with what you need to see for your responsibilities. Maximizes situational awareness into a single display.

Individuals and Organization Profile

Facilitates dynamic, real-time entry of individuals and organizations. Enables incident managers to quickly update organizational and incident rosters.

Two way notification

Notification of incidents can be sent automatically via e-mail, text SMS, or automated voice phone call. Two-way communication allows persons in the field to provide availability updates.

HAvBed Display

Real-time tracking of available hospital beds by type and facility, across a geographic region.

Sharable Folders with access control

Create folders to share information by organization or incident. Access controls to ensure information is only available to authorized parties.

NIMS/HICS compliant forms

Automatically-created, editable after-action reports for incident database using NIMS/HICS compliant forms. Saves time and reduces bureaucracy.

Integrated maps

Provides geographic view of incidents, users, resources and facilities. Users can be displayed by role. Option exists to accept GPS coordinates for real-time tracking of mobile users and resources.

Organizational chart

Automatically generates organizational chart for a given incident, based on users selected for roles.

On-line chat

Provides ability for users to collaborate via group or private chat sessions.

Multi-tiered organizational structure

Allows managers to create flexible, hierarchical organizations at the region, network or campus level.

Situational Mining Services

Optional plug-ins can scan external data sources such as web sites, RSS feeds, or HL7 message streams to identify up-to-the-second trends. These services can also be configured for automatic nomination of incidents.



Options

CUSTOMIZE YOUR SYSTEM FOR MAXIMUM EFFECT

As a user, 24/7 access to the COP couldn't be simpler: all you need is a web browser and Internet connectivity. We also offer a variety of hosting options, from low cost, do-it-yourself options to remote hosting packages where we take care of everything. Above all, the COP is easily customizable to your needs. The baseline product comes with a wide array of standard features. Optional features, such as support for GPS tracking of assets or automatic notification of personnel, are also available. To heighten your awareness, we can integrate custom data sources or situational mining services upon request. Once the COP is deployed, we have numerous training and support options for any budget. To ensure your organization is at peak efficiency when the incident occurs, we can help you use the COP to conduct realistic emergency simulations and exercises. In short, just tell us what you want and we will strive to make it happen.

User Requirements

Any Web Browser • Internet Connection

Host System Requirements

Server (1+GHz) • 50 GB Hard Drive • 2 GB RAM • Windows 2003 Server • SQL Server 2005

Hosting Options

Self-Host • Turnkey Installation • Remote Account

Standard Features

COP Portal • Mapping Service • Chat Capability • Integrated Help • NIMS/HICS Compliance

Optional Features

HL7 Situational Mining Service • RSS Feed Mining Service • Document Mining Service
Web Portal Mining Service • GPS Tracking • Automated Incident Notification

Support Options

E-mail Support (Included) • Telephone Support • 24/7 Support
On-site Support (up to 2 weeks)

Training Options

Remote (2-day) • On-site (3-day)

Additional Services

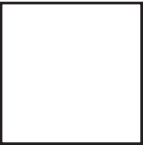
Customization • Data Source Integration • Exercise Support

For more information on the
Complete Operational Picture, visit our website at
www.situational-awareness-systems.com





Situational Awareness Systems
434 Normal Street
East Stroudsburg, PA 18301



**In an emerging crisis,
every second counts.
Count on
Situational Awareness
Systems.**